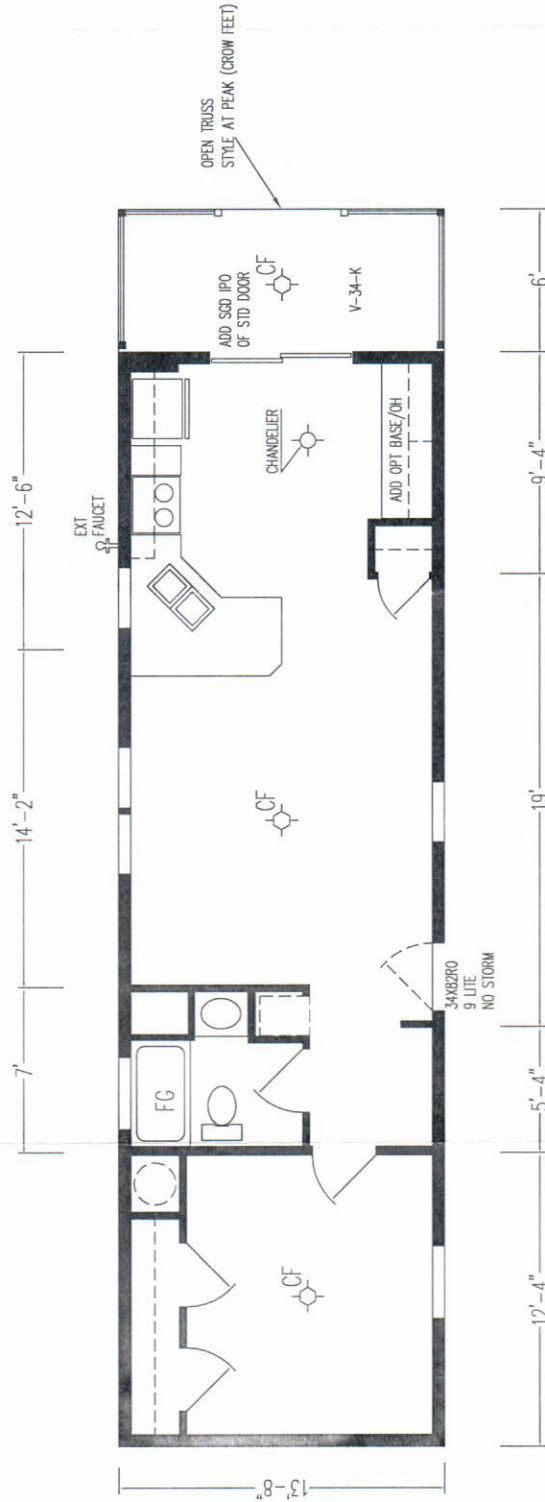


MODIFIED



BY: JBT 7/21/16
 INK# 14-00091-MO



MODIFIED- BY JBT 6/21/16 ARKANSAS CITY, KS
 1. MOVED FRONT EXT DOOR TO HITCH END
 NOTE: MAY NEED TO REQUEST DAPIA FOR PRINT

DIVISIONS		REVISIONS	
111	341	552	
112	344	553	
115	345	571	
X	125	355	591
	131	528	812
	143	531	
163	535		
171	536		
181	538		

REV	DATE	BY	DESCRIPTION
B	7/28/15	KS	REV TO 8' FLAT STD, UPD TO NEWEST SPECS, ADD HI-LO KIT
A	4/13/14	KS	RELOC EC PANEL, ADD HEAT TAPE OF

BOX LENGTH	DESCRIPTION
52'-0"	5214-1CK

DRAWN BY:	WIND ZONE	ROOF ZONE	S.M.N
T L	15#		

SHEET	OF

DRAWING NUMBER
14-03699-01N